

Quick Guide for VL450Pro

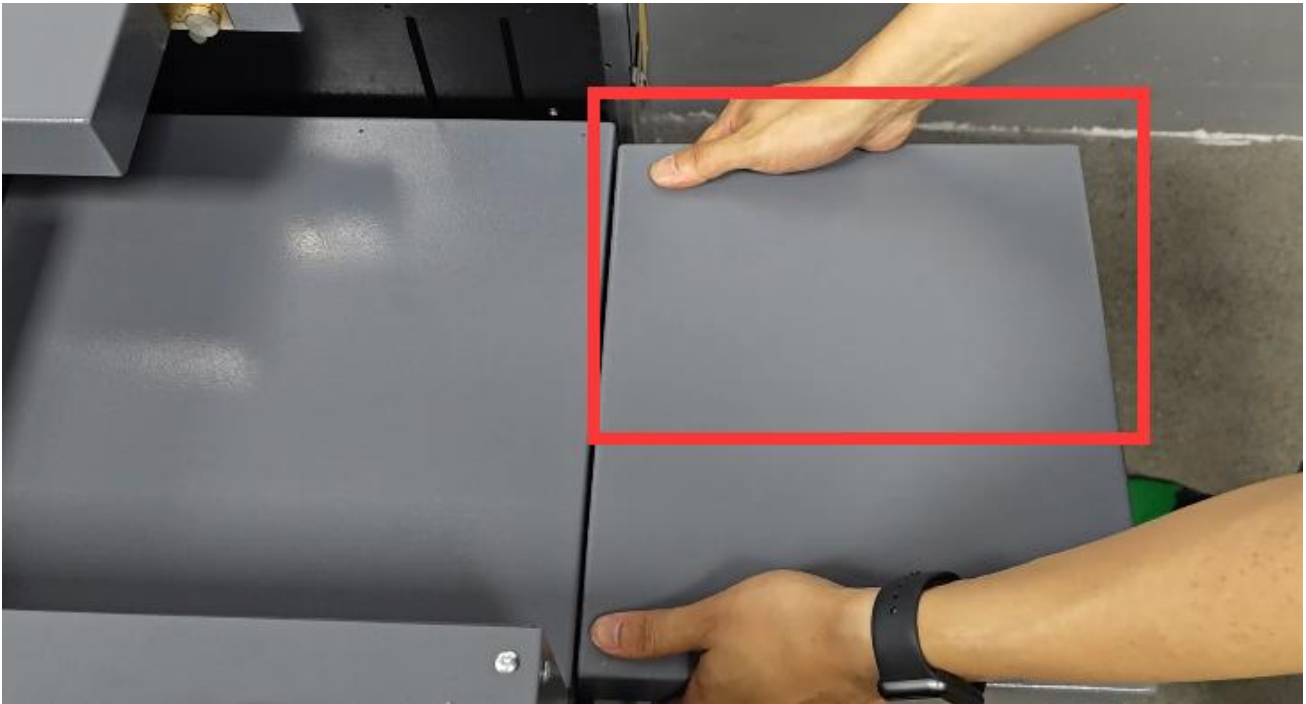
1. Take the machine out of wooden package box



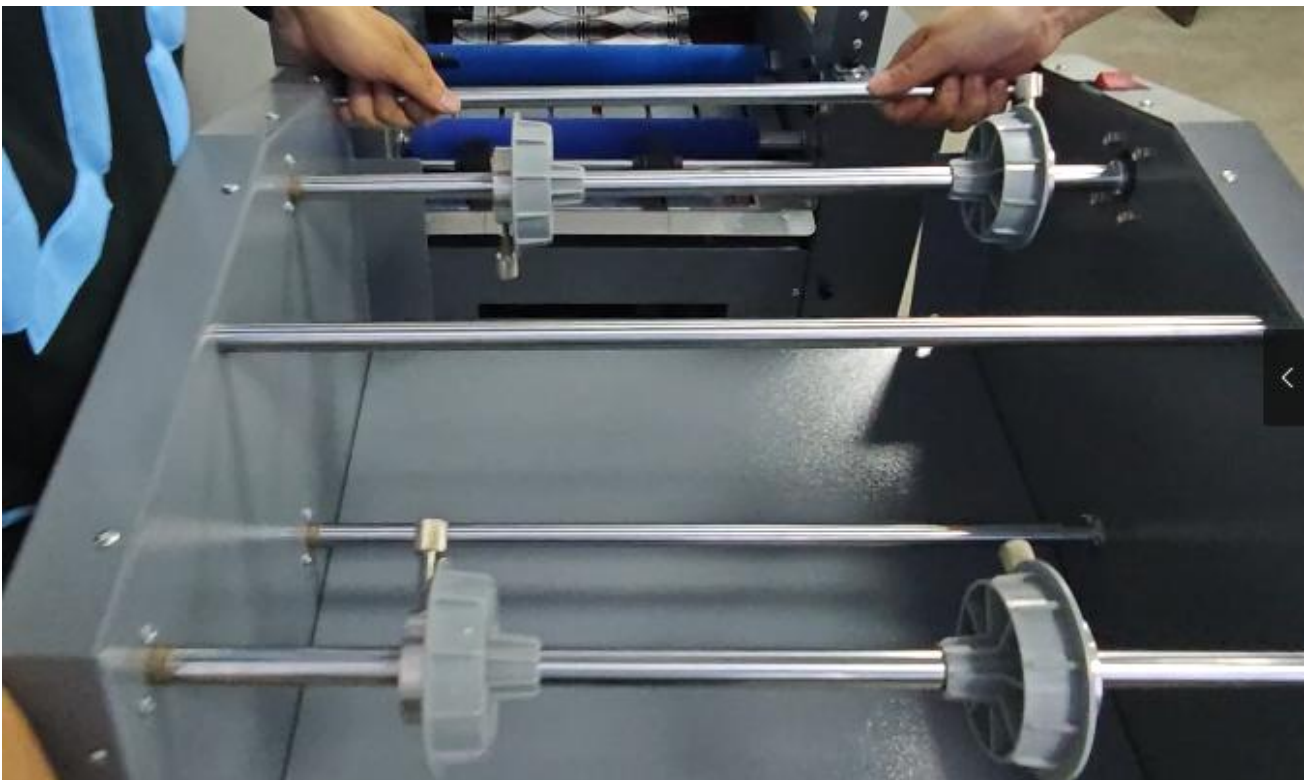
2. Install the touch screen



3. Install the feeding platform



4. Install the receiving platform (had better 2 people lift it), and tighten the screws



5. Install the foiling waste roller with 3" core



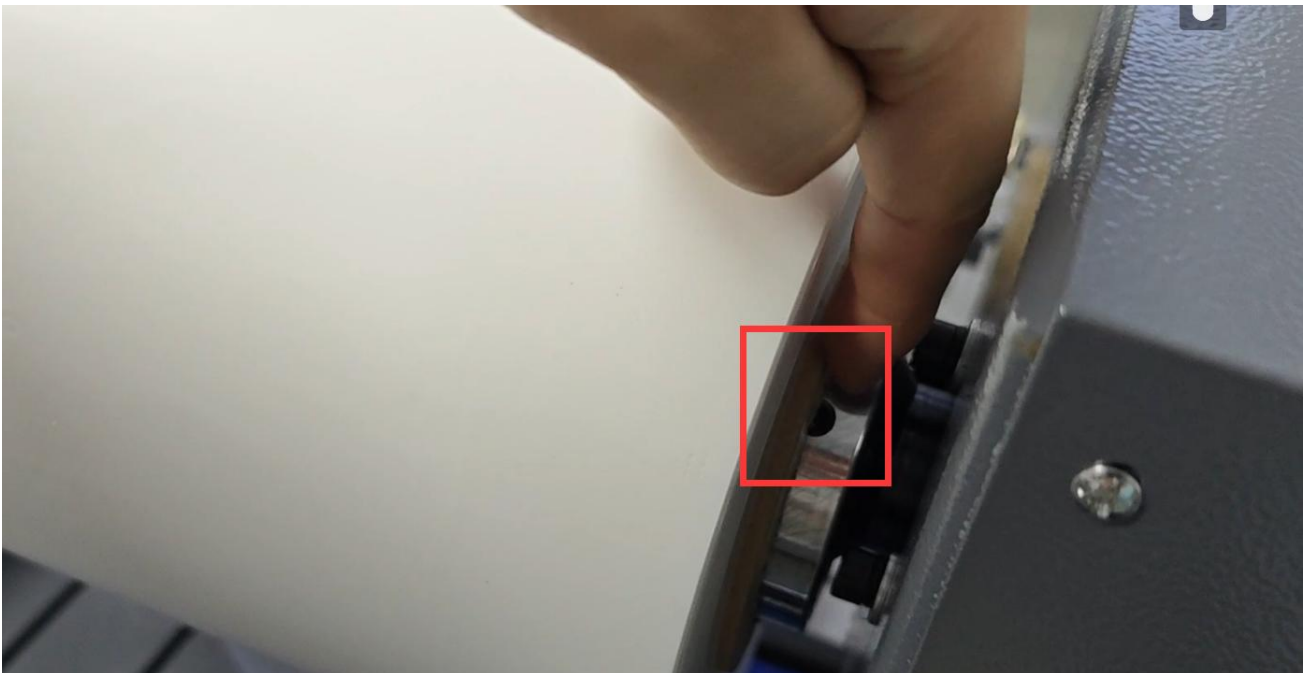
6. Install the smooth knob, notice: when machine working, please let it to be off like the below picture.



7. Turn on the machine



8. Install the roll hot film, Notice: the edge of the core need to be half of this screw



9. Take off the protection cover



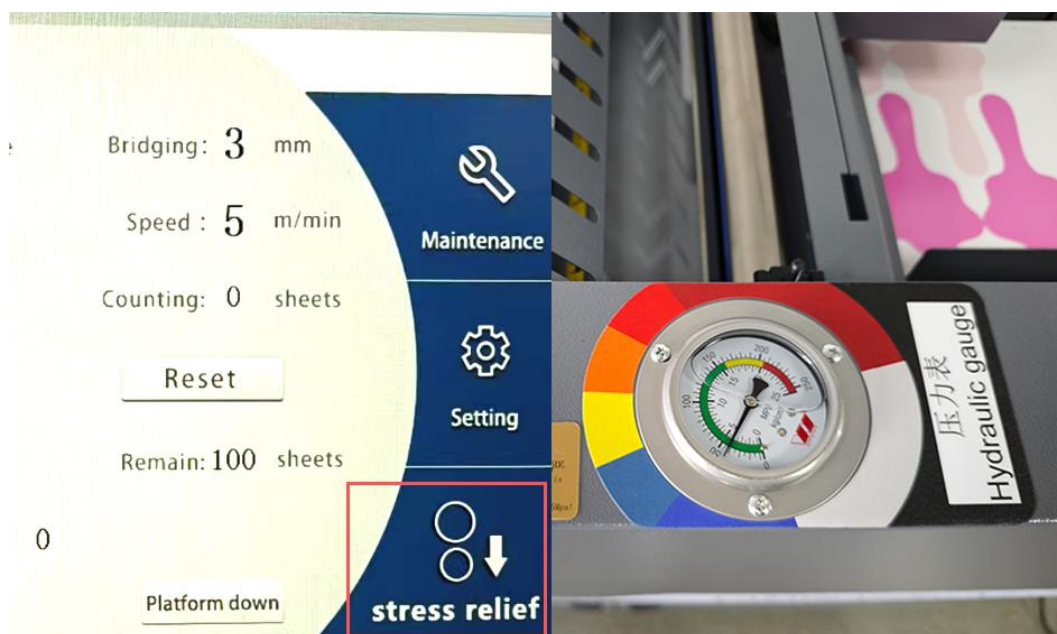
10. Set the temperature based on your hot film (95-100C), press heating off



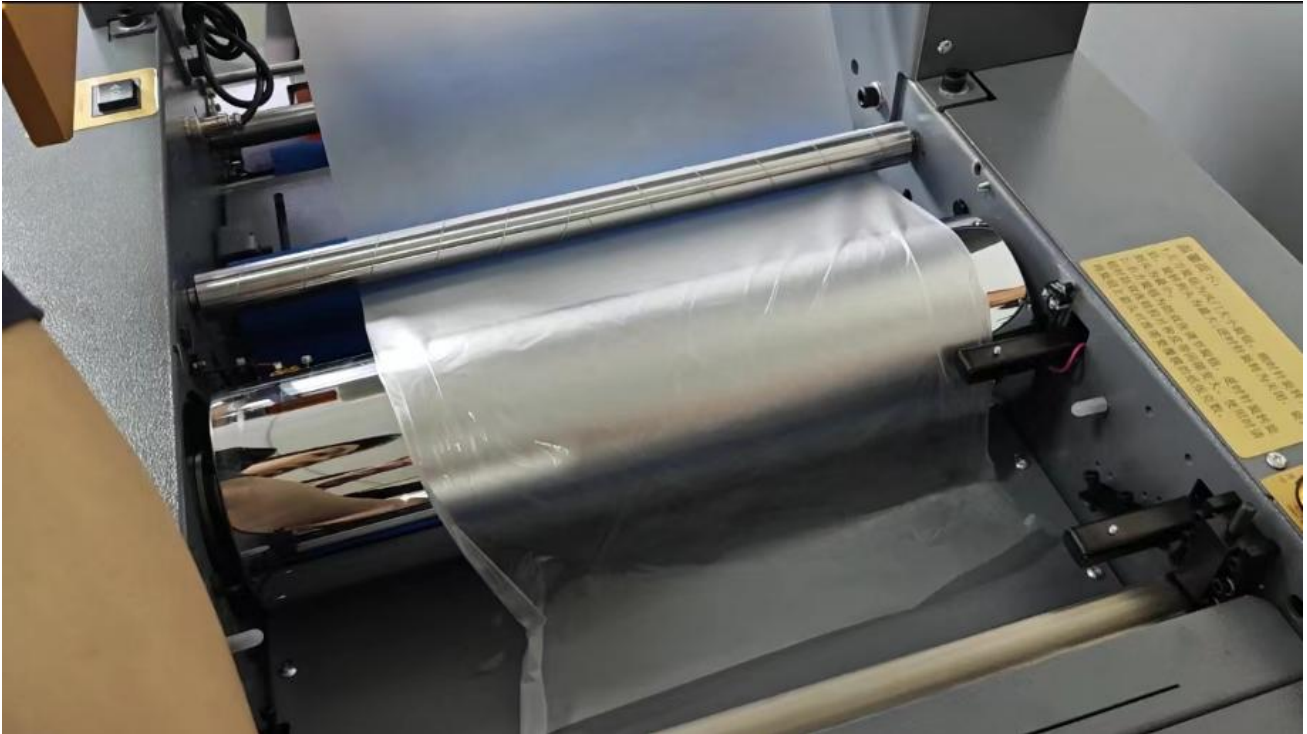
11. New Version VL450Pro, no need manually give the hydraulic pressure like 450X, when you press the “start” button on the touch screen, it will automatically add the pressure. Notice: less than 5Mpa like the below picture



12. Relief Pressure, when the machine not working, please remember to relief it before turn off the machine. (touch screen press the “Stress Relief”, it will go down to 0MPa)



13. When install the film, please let it to be a little longer like this picture and use one hard paper 250GSM to install the film.



14. For the hard paper, press the left side, down to the bottom



15. Touch screen Examine and repair-main motor-go ahead

Press go ahead constantly, let the sheet paper go ahead, until to the paper could not go.



16. Reinstall the protection cover



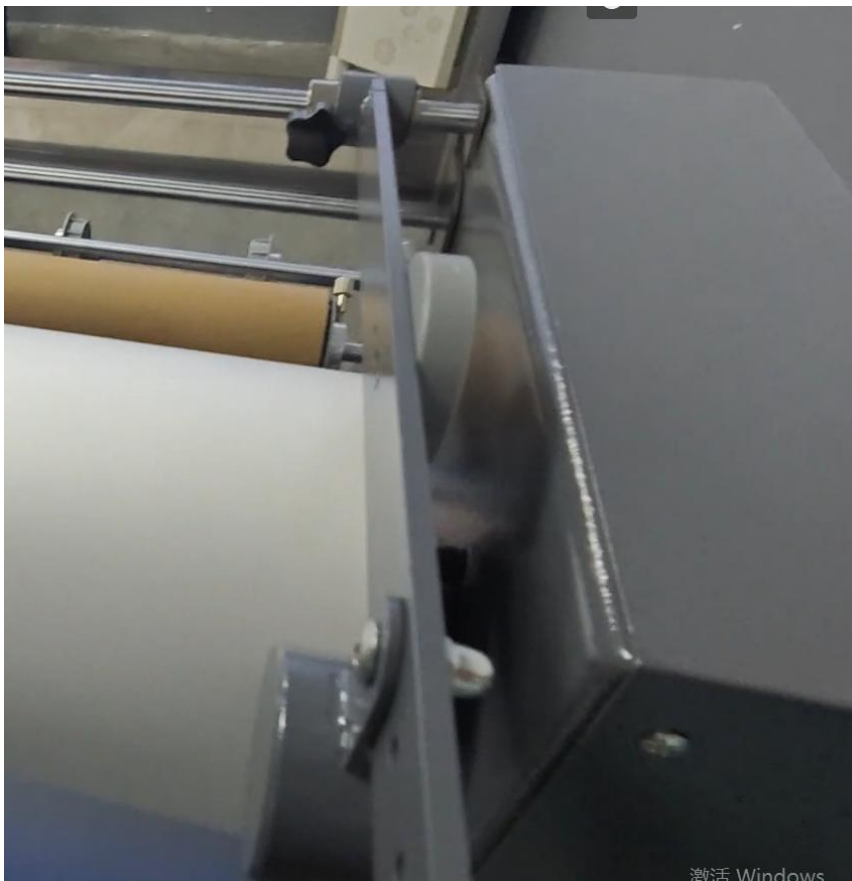
17. Put down the sheet media under 7cm, need let the all the sheet paper to be tidy
Notice: the front side please leave 3-5mm, give the distance for blowing, and let the paper automatically feed.



18. Turn on the Damp knob and anti two sheet paper knob based on the paper weight



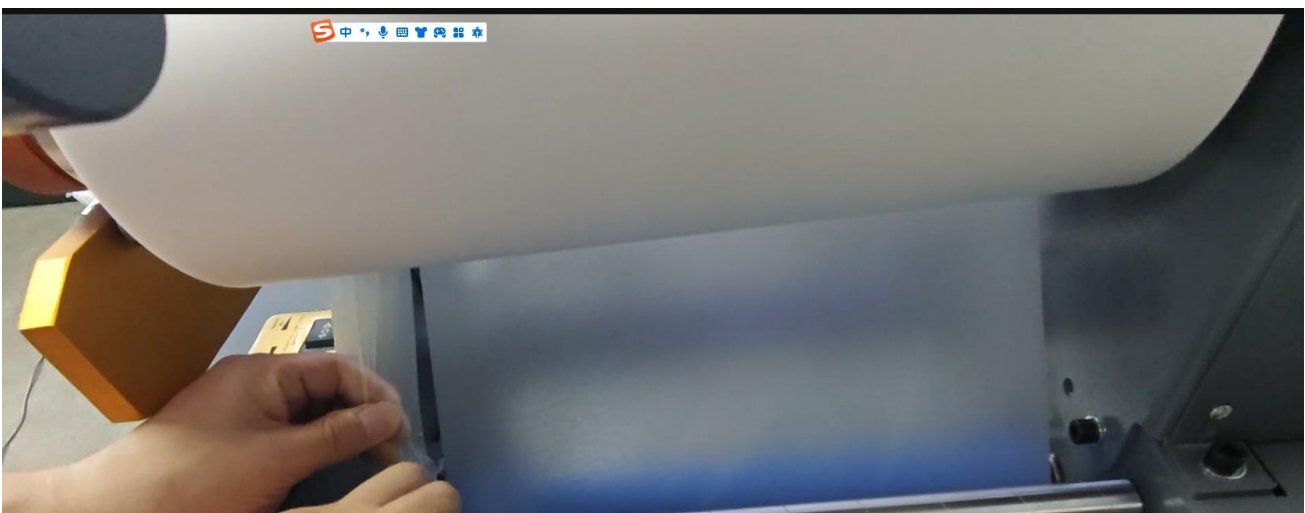
19. Put down the perforating blade. Notice: to the edge 3-5mm

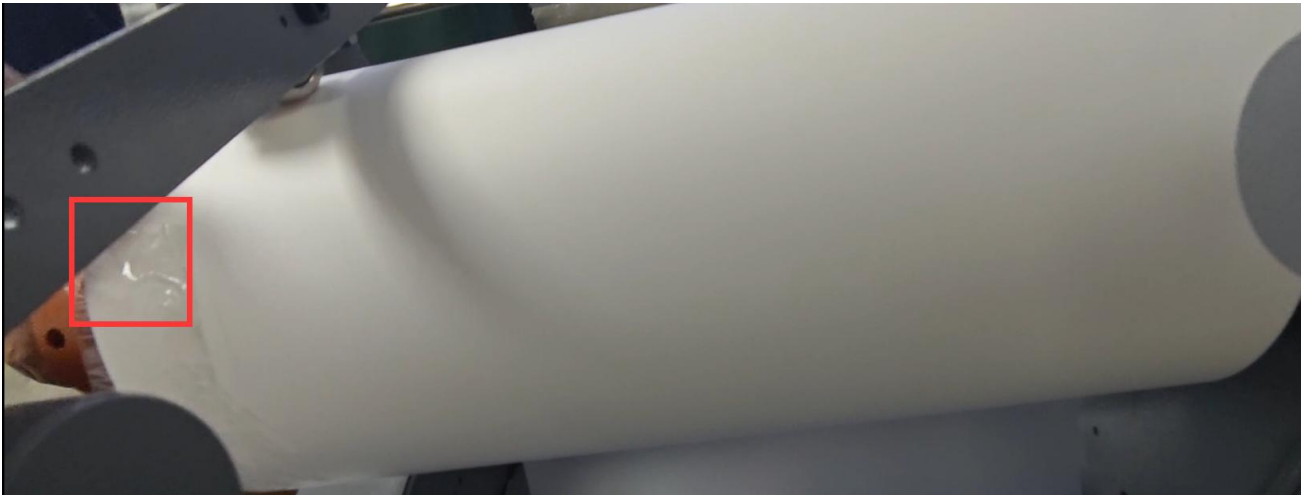


20. Put down the cutting film blade according to your sheet media width (a little narrow than sheet media width)

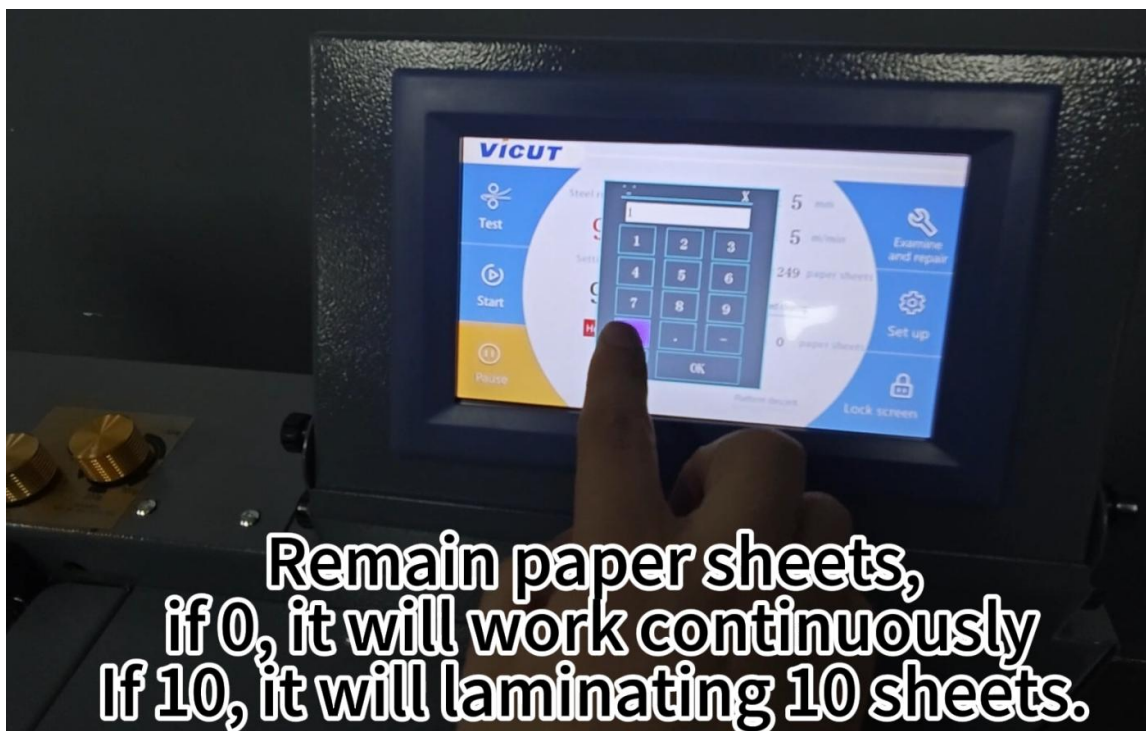


Notice : for this extra film need to use one tape sticker on the roll film, this is very important, please not let the extra film to go to pressure roller, that is difficult to take away, so when it cut, you need focus on, and use the tape.



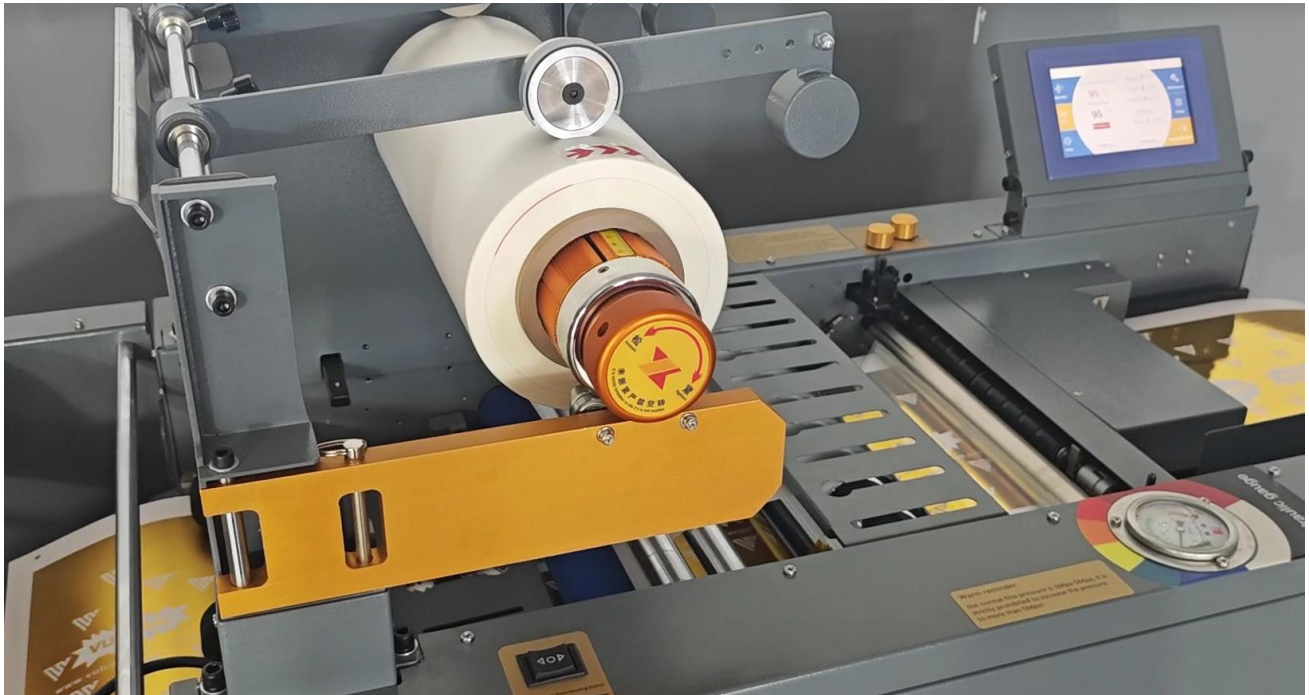


21. Touch screen: Test button, it could pass one sheet media to make the film feeding successfully.



Remain paper sheets,
if 0, it will work continuously
If 10, it will laminating 10 sheets.

22. Press the start button, the machine will do the laminating



Daily Maintenance: WD40, one cleaned cloth, clean the vinyl on the pressure mirror roller. If have some vinyl on it, it will influence the laminating result.

